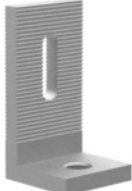


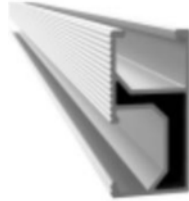





# Roof Bracket Hanger Bolt Installation Guide



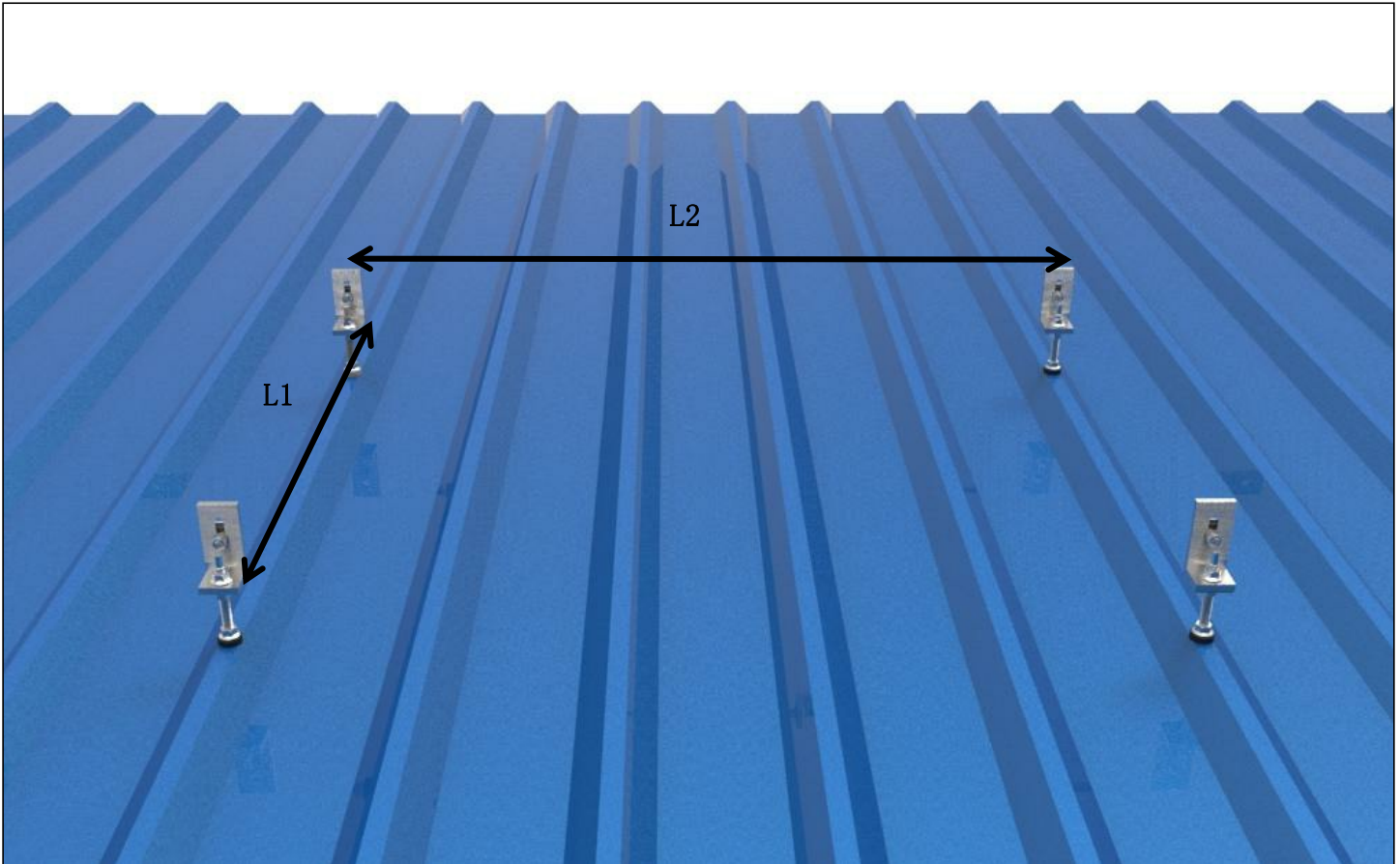
## Components List:

Model name	L Roof Clamp 4 pcs	Bolt & Nut 4 sets	Hanger Bolt 4 pcs	Rail 4 pcs
Picture				

Model name	Rail Splice Kit 2 pcs	End Clamp 4 pcs	Mid Clamp 2 pcs
Picture			

## Installation Steps:

Determine the position of the Roof Anchors according to your design.

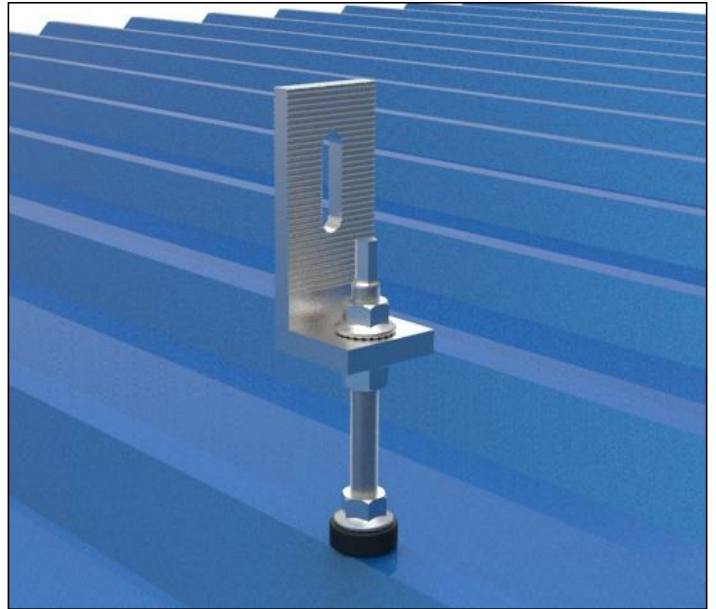
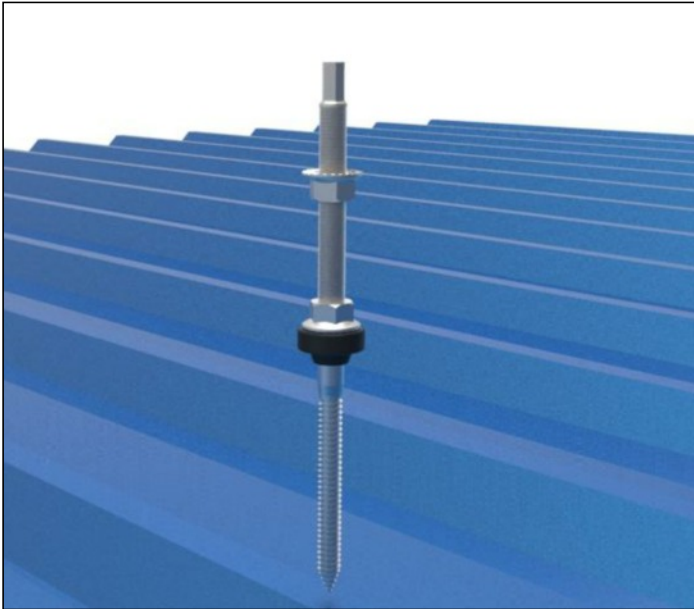


L1: Distance between rails is about  $0.6 * \text{panel length}$ .

L2: Distance between L roof clamps is about 1000mm.

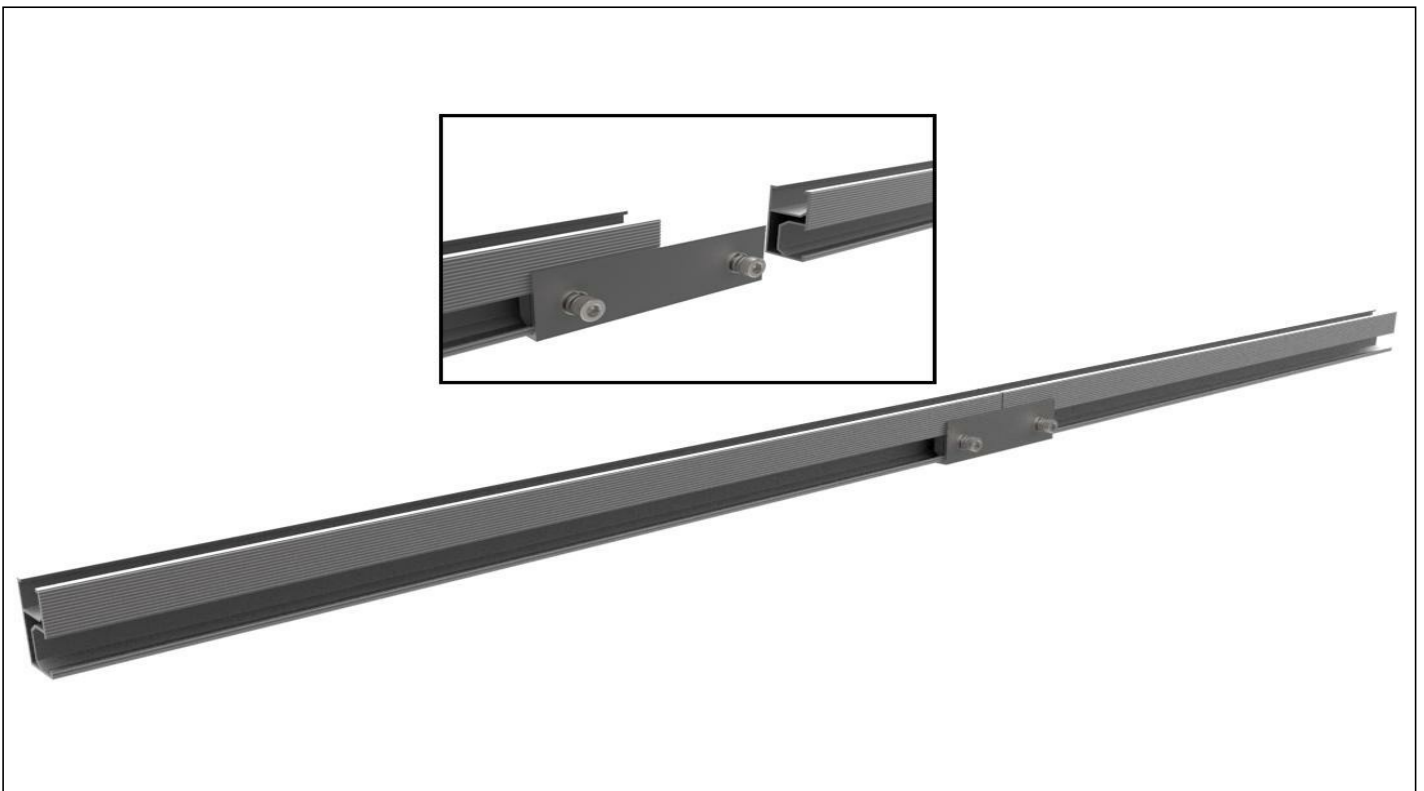
**1. Install the Hanger Bolt on the roof.**

Fix the L roof clamps to the hanger bolts.



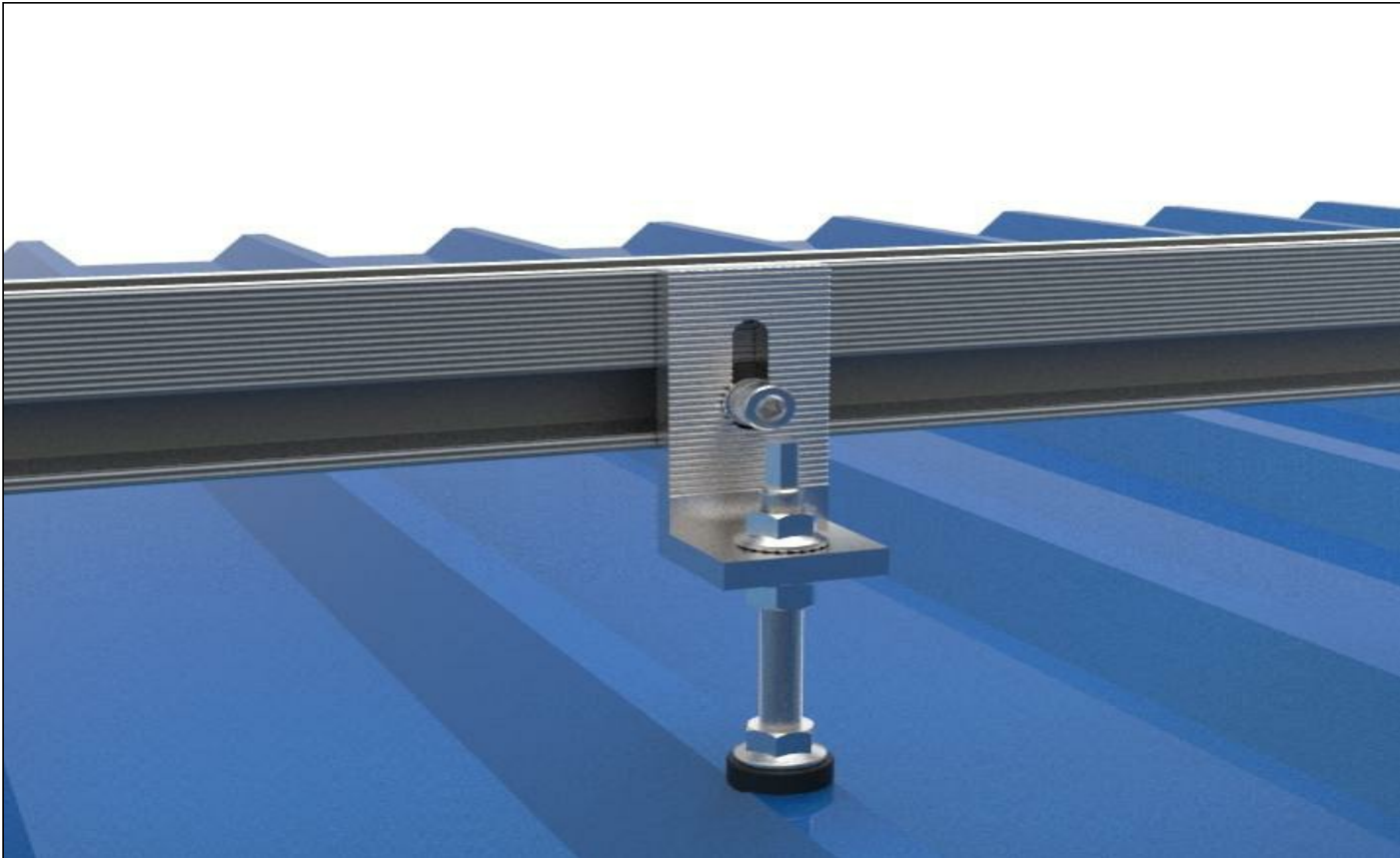
**2. Connecting two rails with the the rail splice kit.**

An expansion gap at the rail joints is suggested. Leave a little gap between two rails.

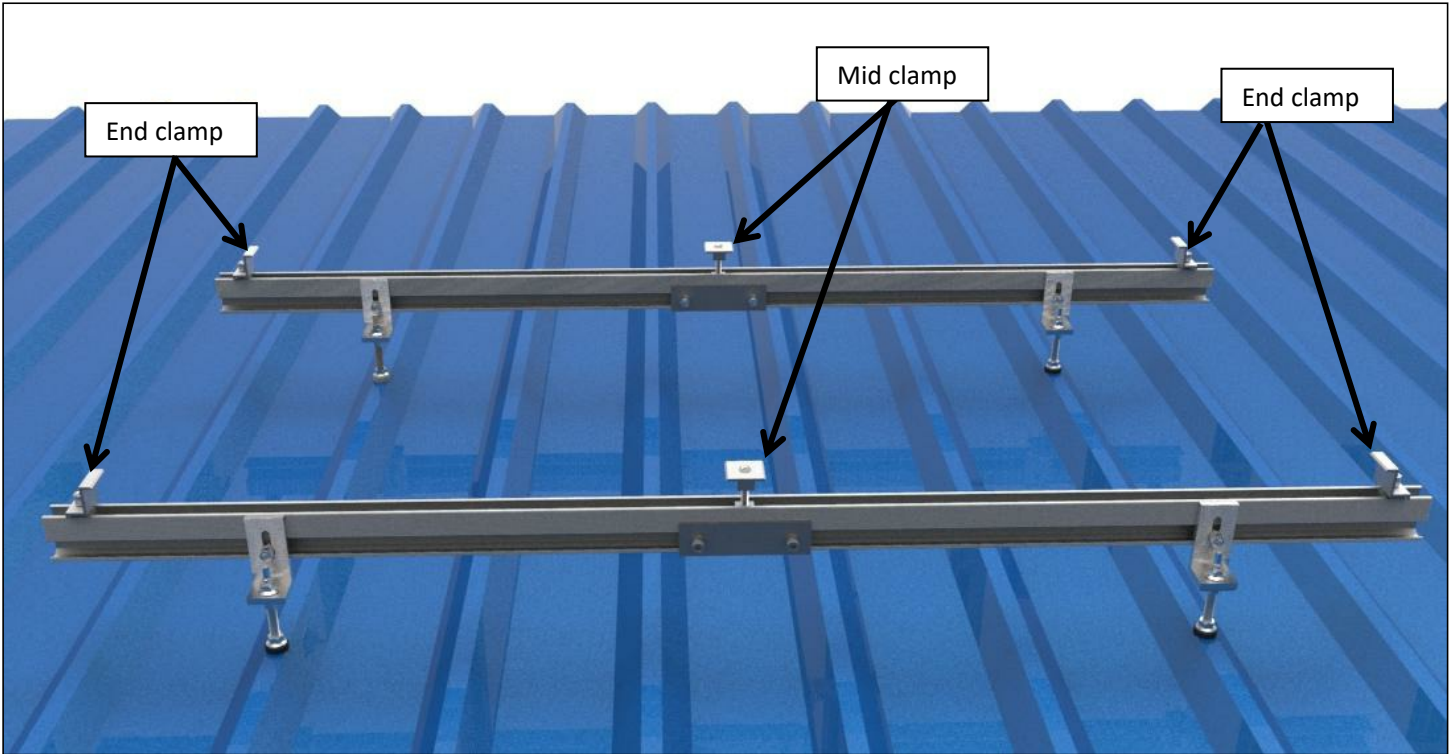




3. Install the rail on the L roof clamp with the bolt and nut.



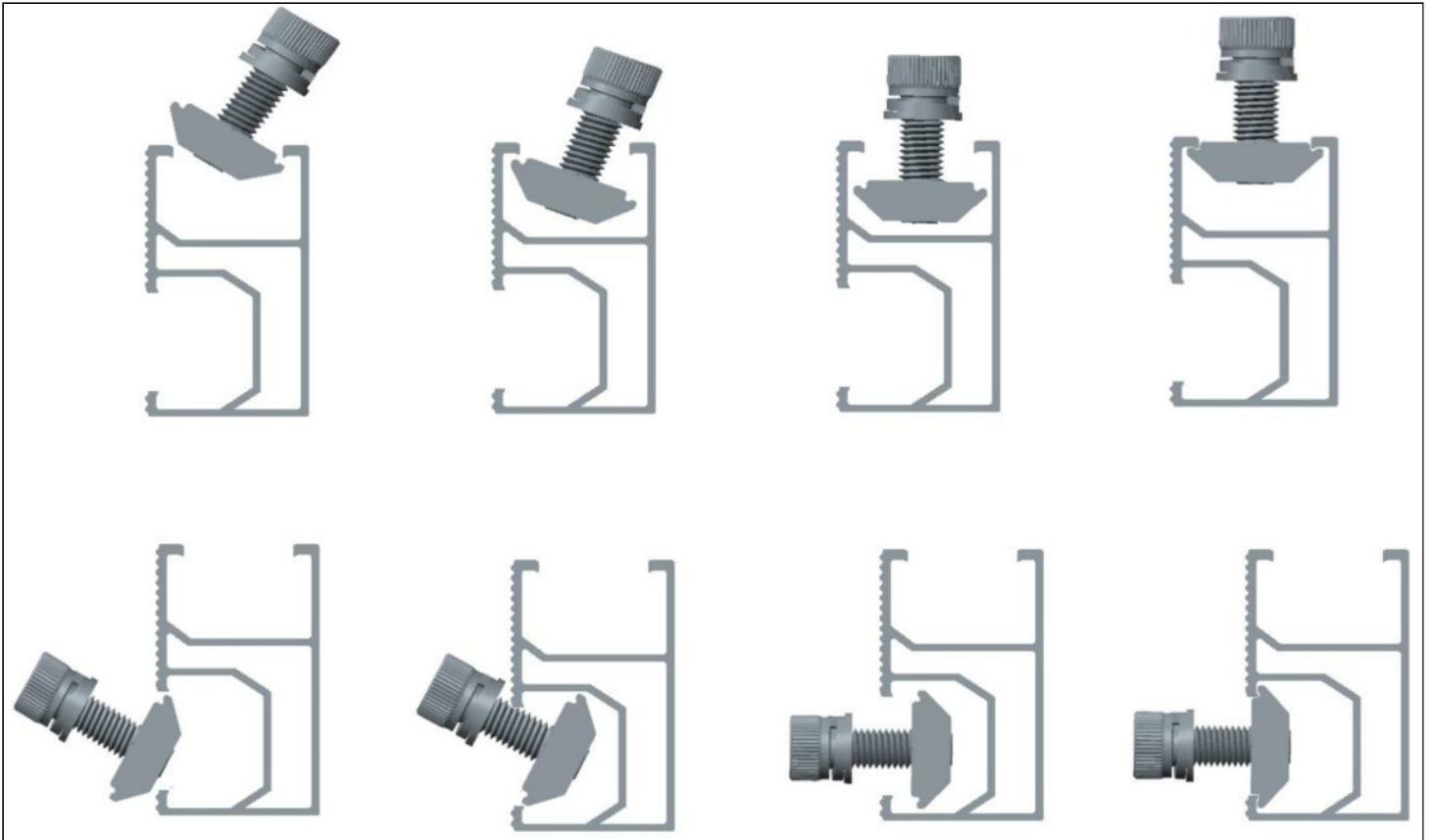
4. Place the first solar panel of the bottom row. Slide the end clamp tightly against the solar panel and fasten it. Fix the solar panel with the end clamps and mid clamps.



5. Finished.



## Installation of nut:



### Registered office:

Sunshine Solar Limited

Unit 30, Ashwellthorpe Industrial Estate

Ashwellthorpe

Norwich

Norfolk

NR16 1ER

tel. +44 (0)1508 488188

email. [support@sunshinesolar.co.uk](mailto:support@sunshinesolar.co.uk)

web. [www.sunshinesolar.co.uk](http://www.sunshinesolar.co.uk)