
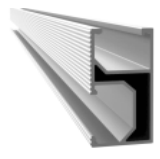



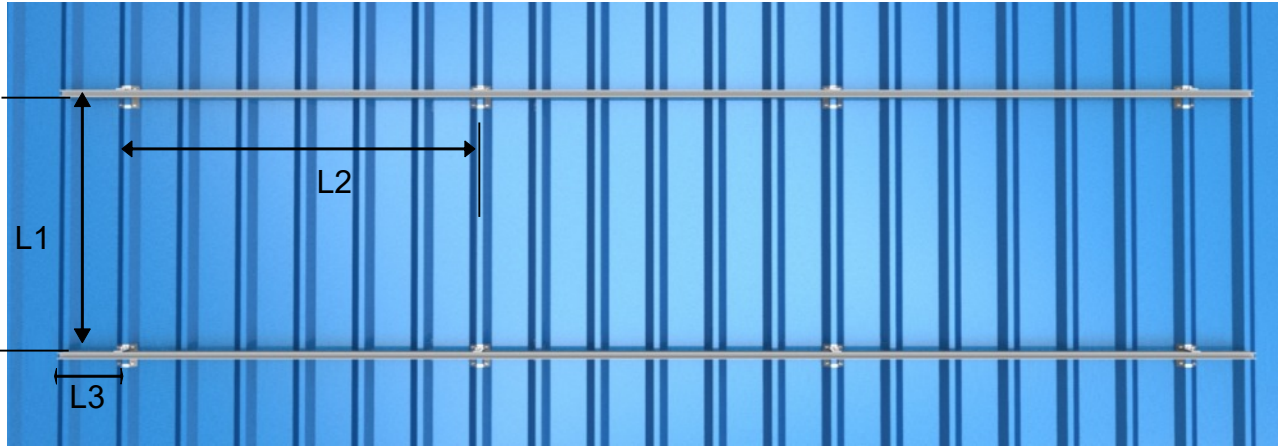


Roof Anchor Corrugated Installation Guide



Components List:

Model Name	Roof Anchor	Rail	Slice	End Clamp	Mid Clamp
Picture					



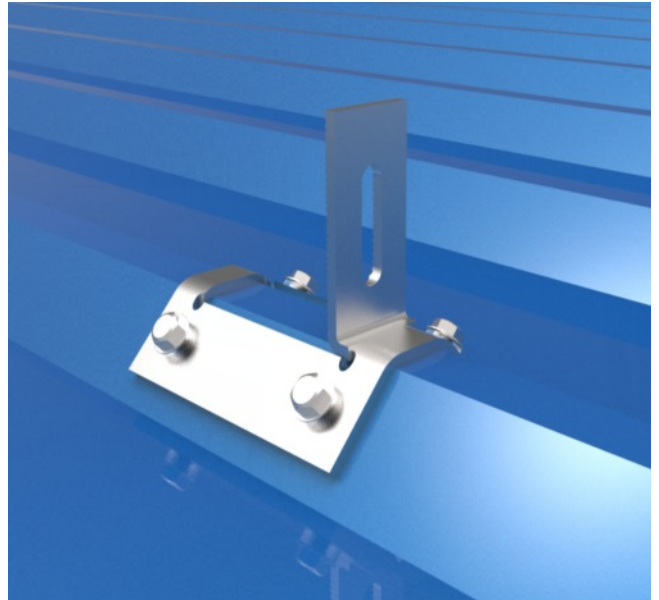
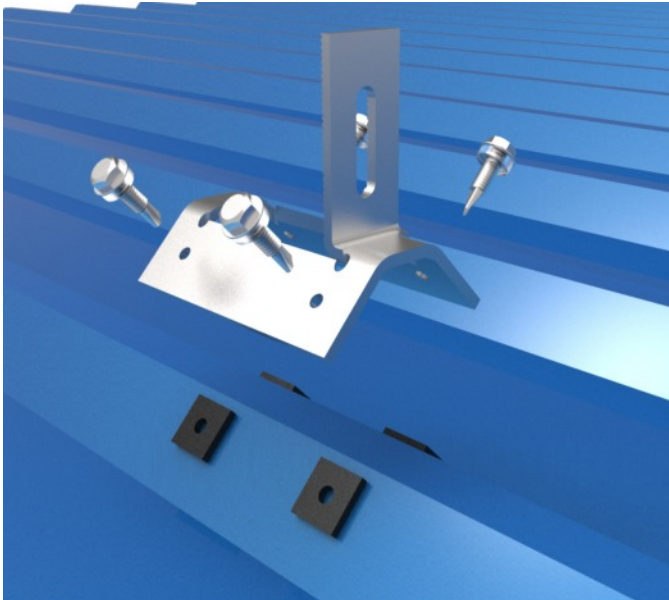
L1: Distance between rails is 0.6x panel length. ($0.6 \times 1960 = 1176\text{mm}$)

L2: Distance between roof anchors, no longer than 1500mm

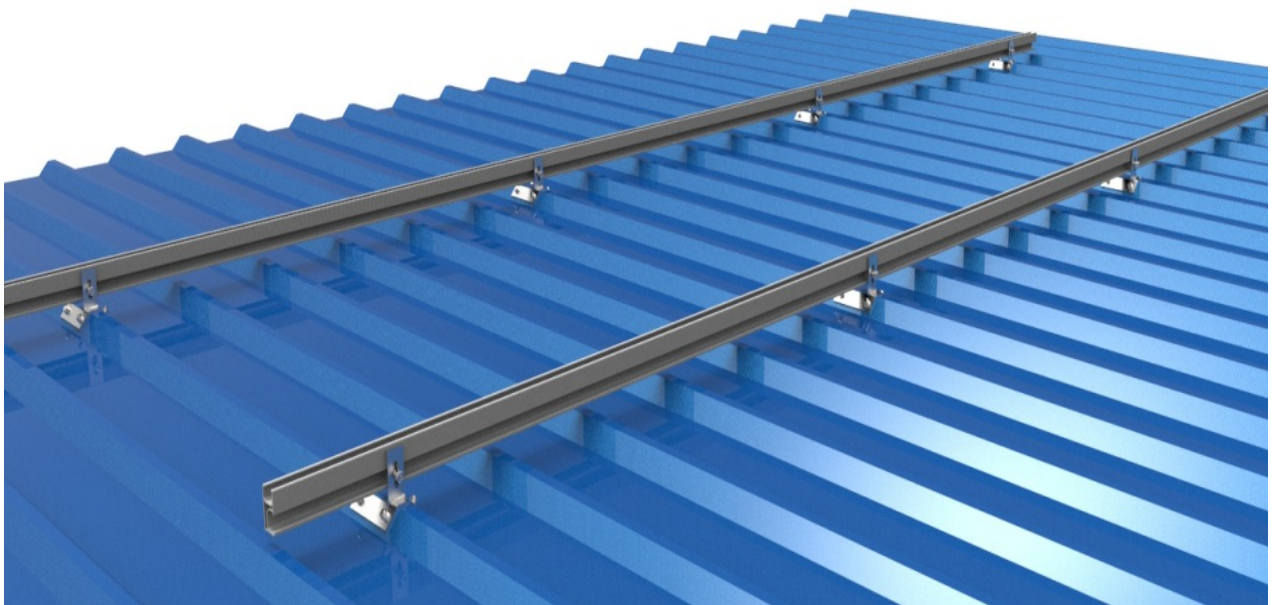
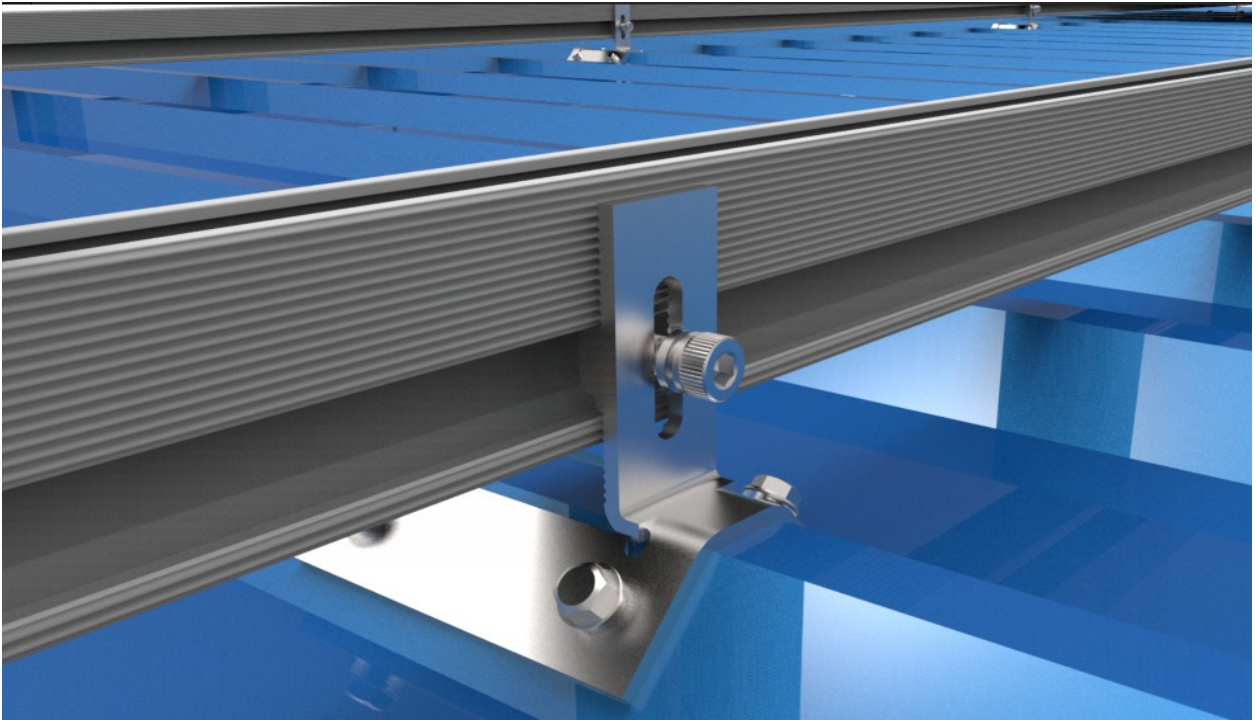
L3: Distance between end of rail and roof anchor is 500mm

1. Install the roof anchor to the roof

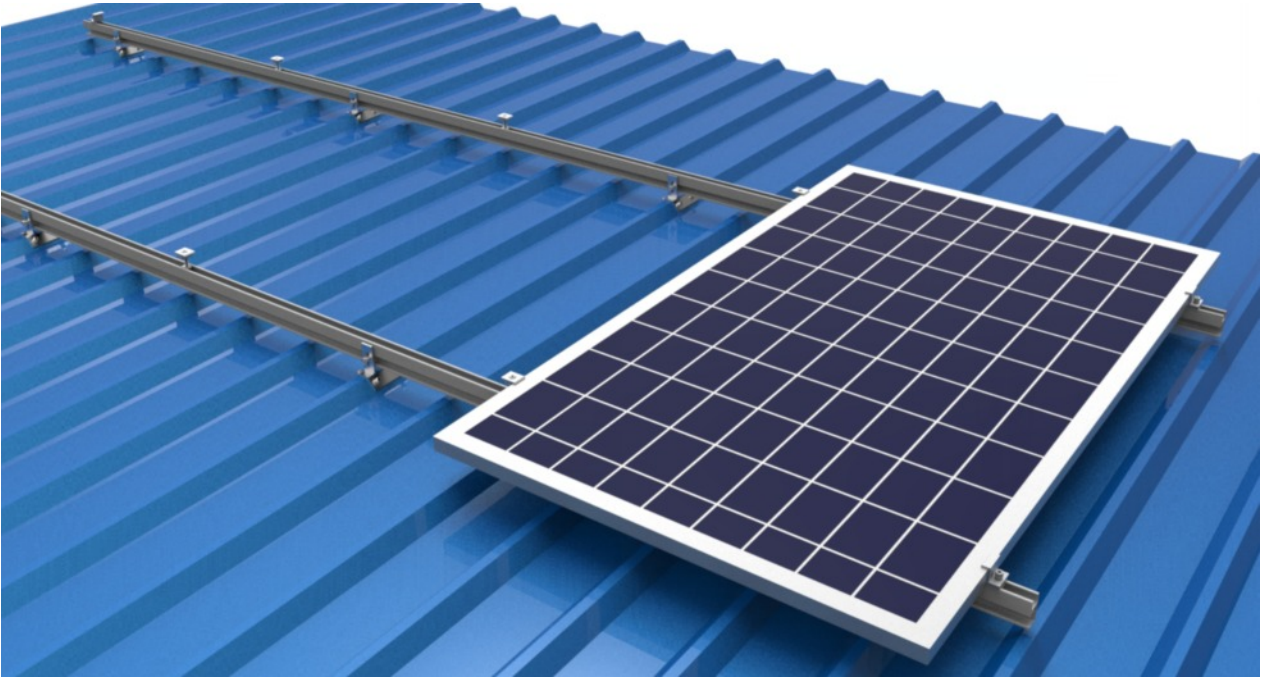
Fix the roof anchors with the self tapping screws and waterproof rubber seal.



2. Install the anchor to the rail with the nut and bolt.



3. Place the first module of the bottom row, Slide the end clamp tightly against the module and fasten it, Install the end and mid clamps.



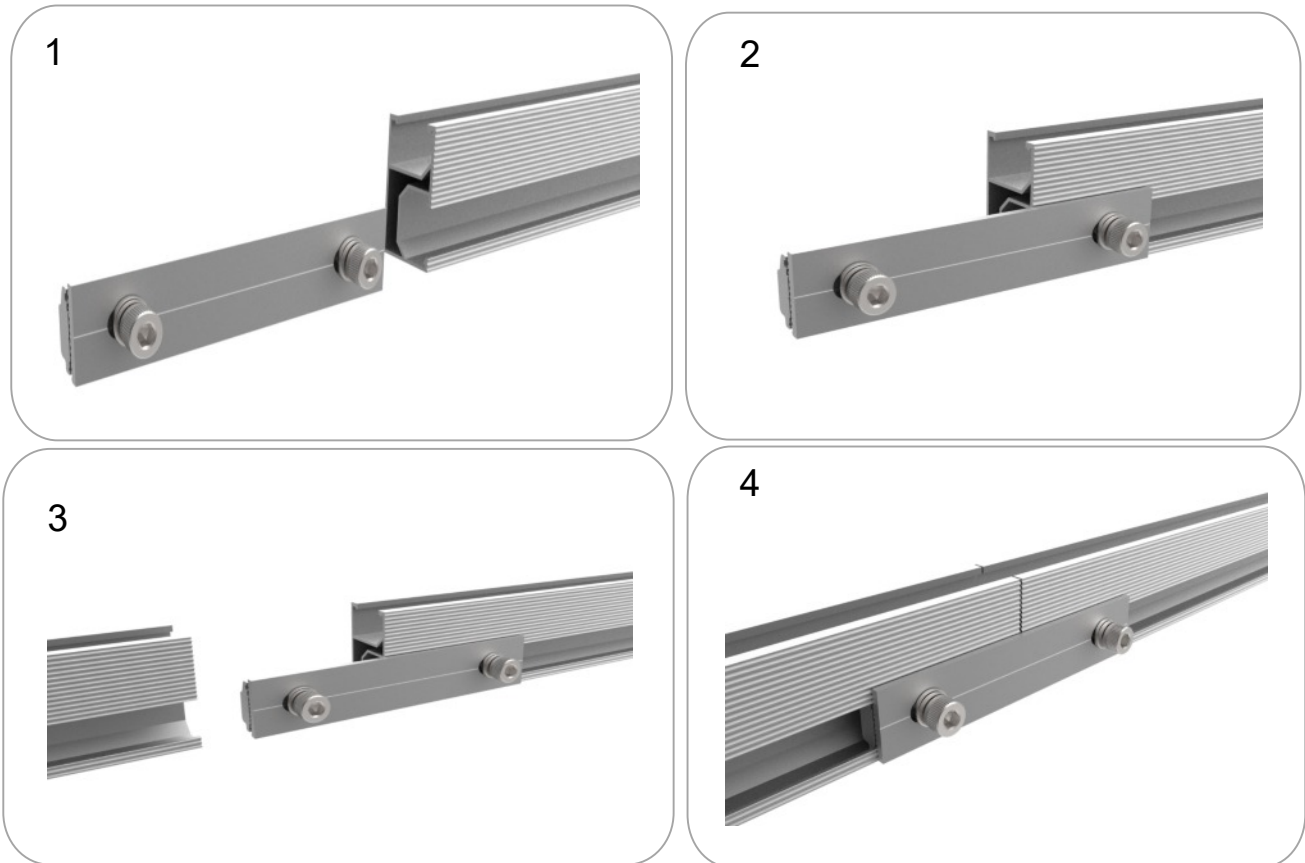
4. Slide the next module against the installed module. Fasten the mid clamps. Install the other modules and clamps this way. Keep modules even.



5. Finished

Tip:

Leave a little gap between the two rails.
When installing two rails with the rail splice rail kit, an expansion gap at the rail joints is suggested.



Registered office:

Sunshine Solar Limited

Unit 30, Ashwellthorpe Industrial Estate

Ashwellthorpe

Norwich

Norfolk

NR16 1ER

tel. +44 (0)1508 488188

email. support@sunshinesolar.co.uk

web. www.sunshinesolar.co.uk

