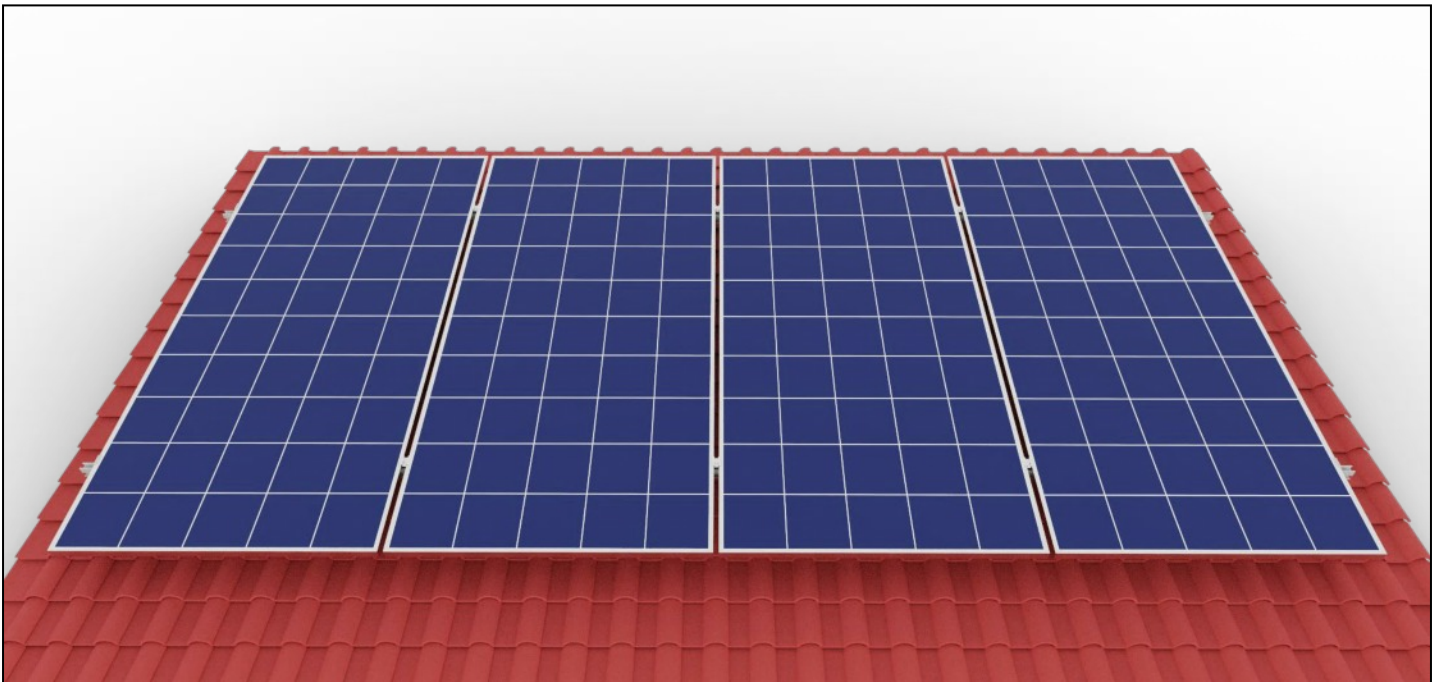









# Roof Anchor Installation Guide



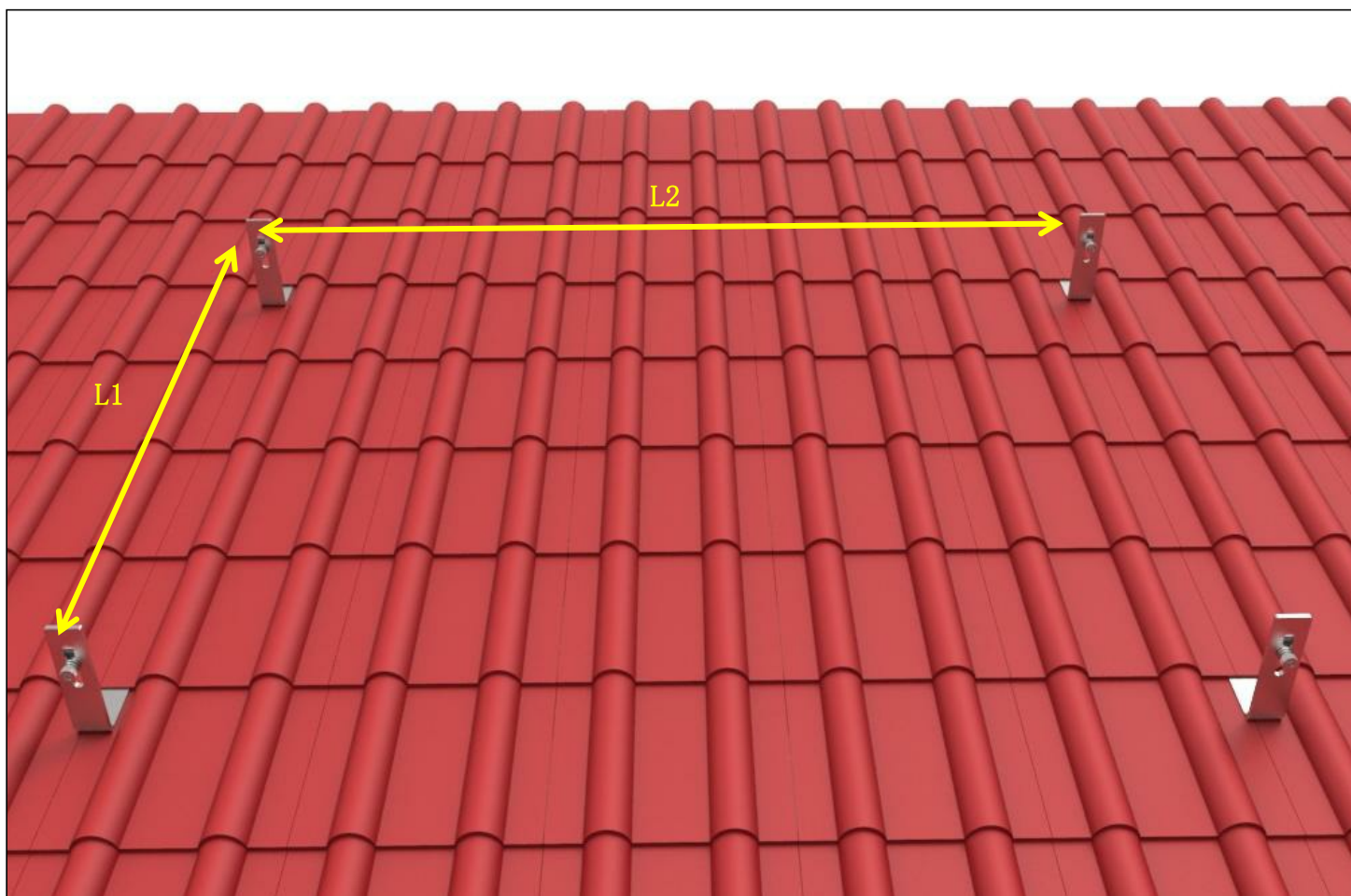
## Components List:

Model name	Roof Anchor	Bolt & Nut	Tapping Screw	Rail
Picture				

Model name	Splice	End Clamp	Mid Clamp
Picture			

### Installation Steps:

Determine the position of the roof anchors according to your design.

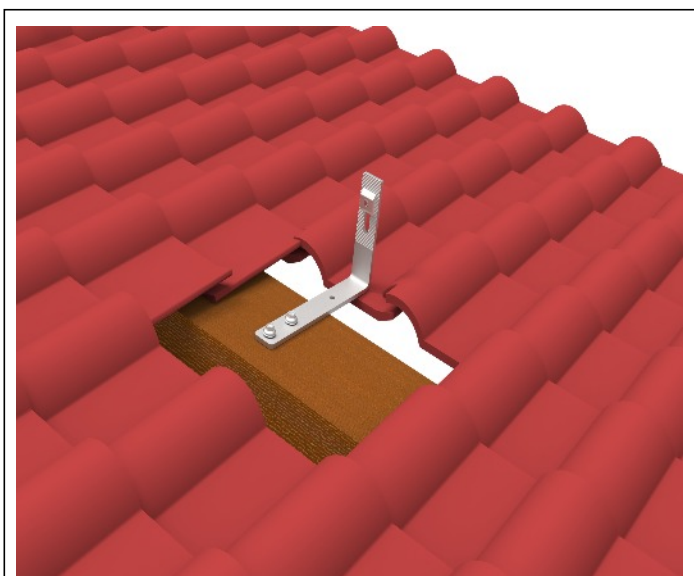
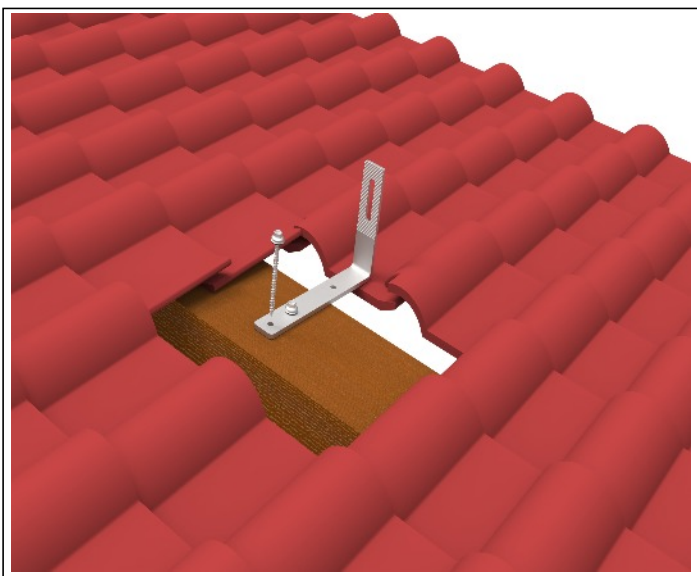


L1: Distance between rails is  $0.6 \times \text{panel length}$ .

L2: Distance between Roof Hooks = about 1000mm.

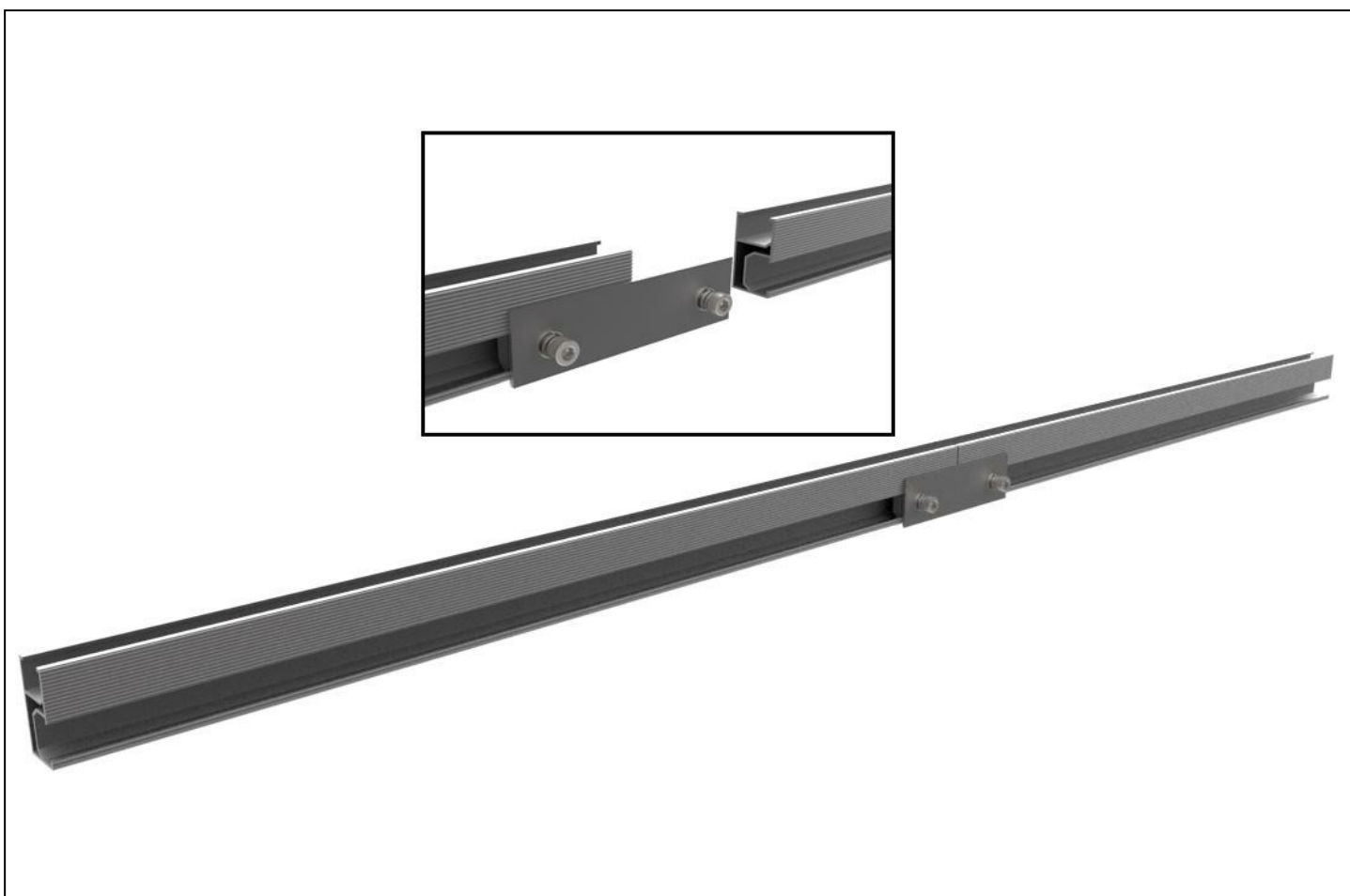
#### 1. Install the Roof Anchor to the roof.

Fix the roof anchor with two self tapping screws into the wood.



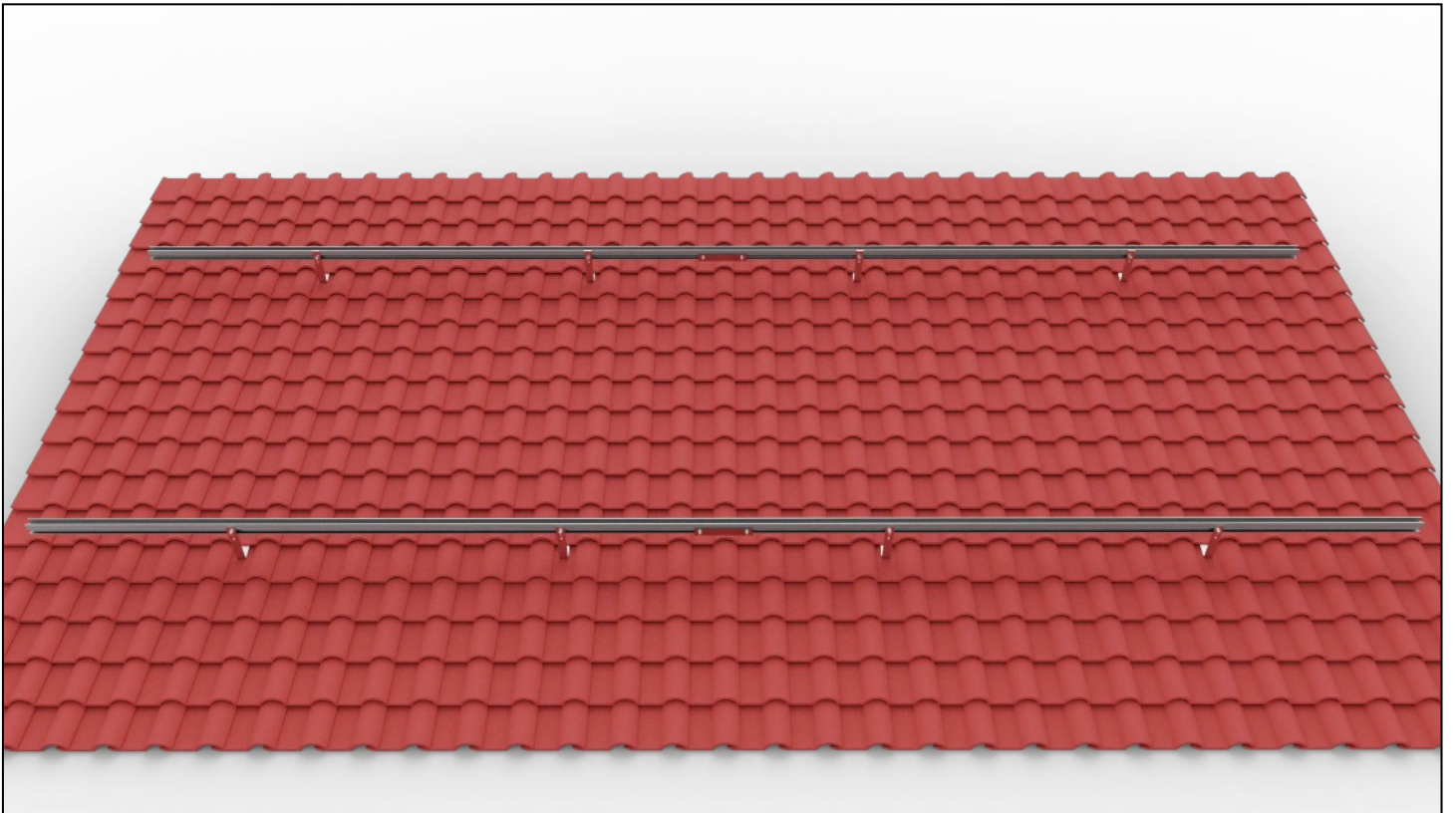
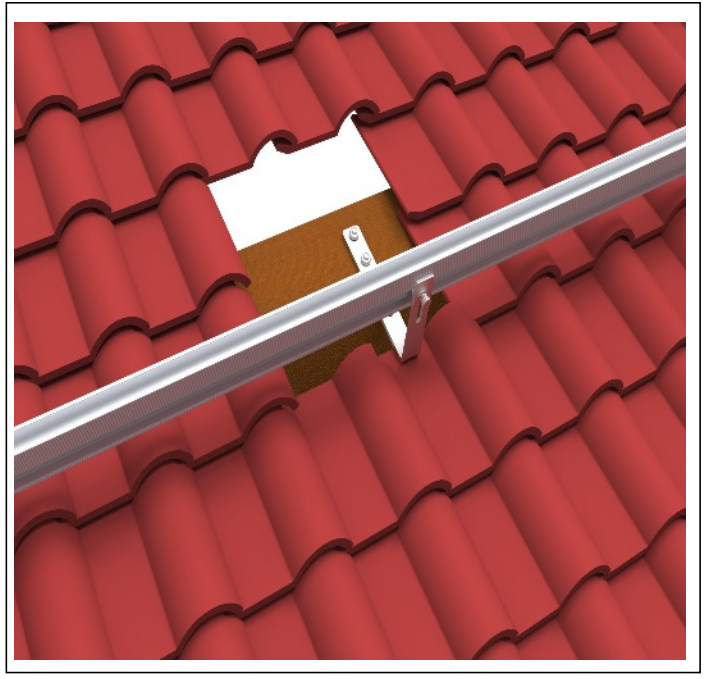
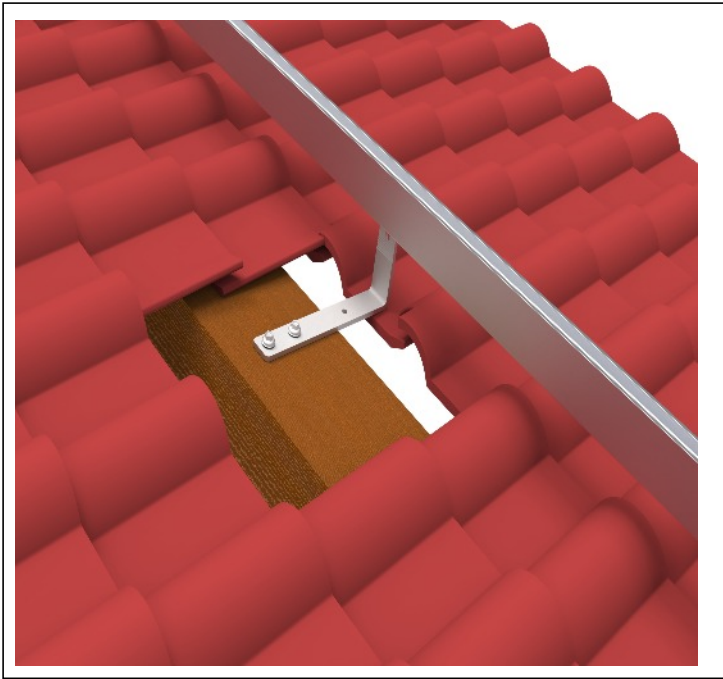
**2. When connecting two rails with the rail splice kit.**

Leave a little gap between the two rails, an expansion gap at the rail joints is suggested.

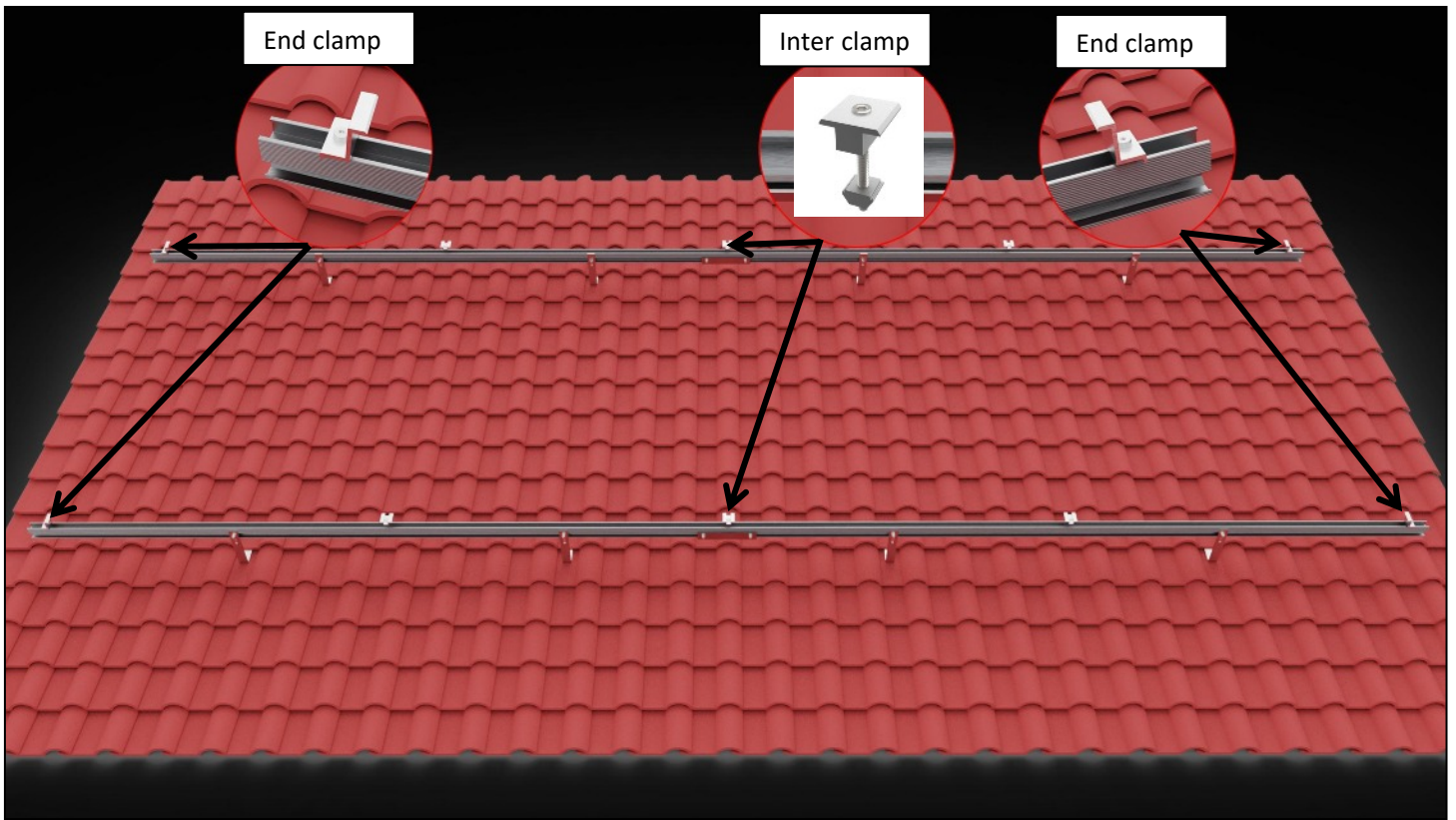


**3. Installing the rail on the roof anchor with the bolt and nut.**

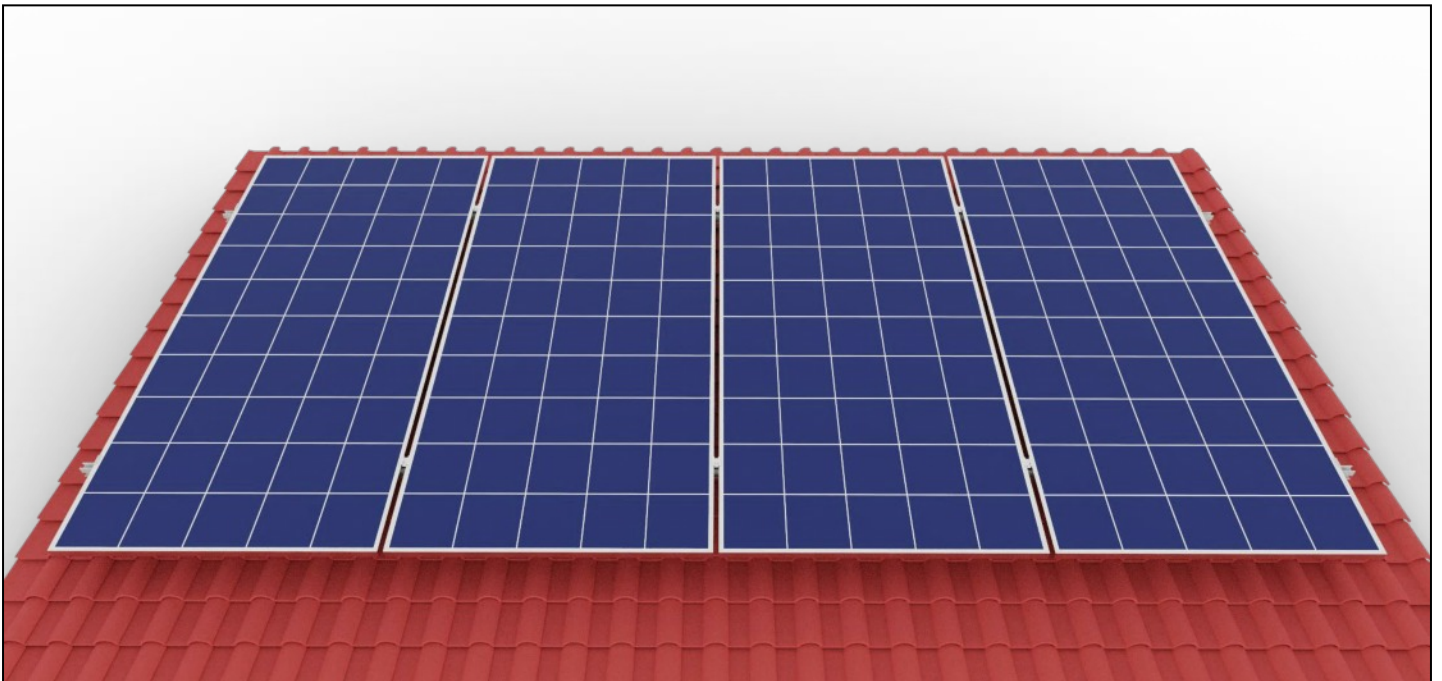




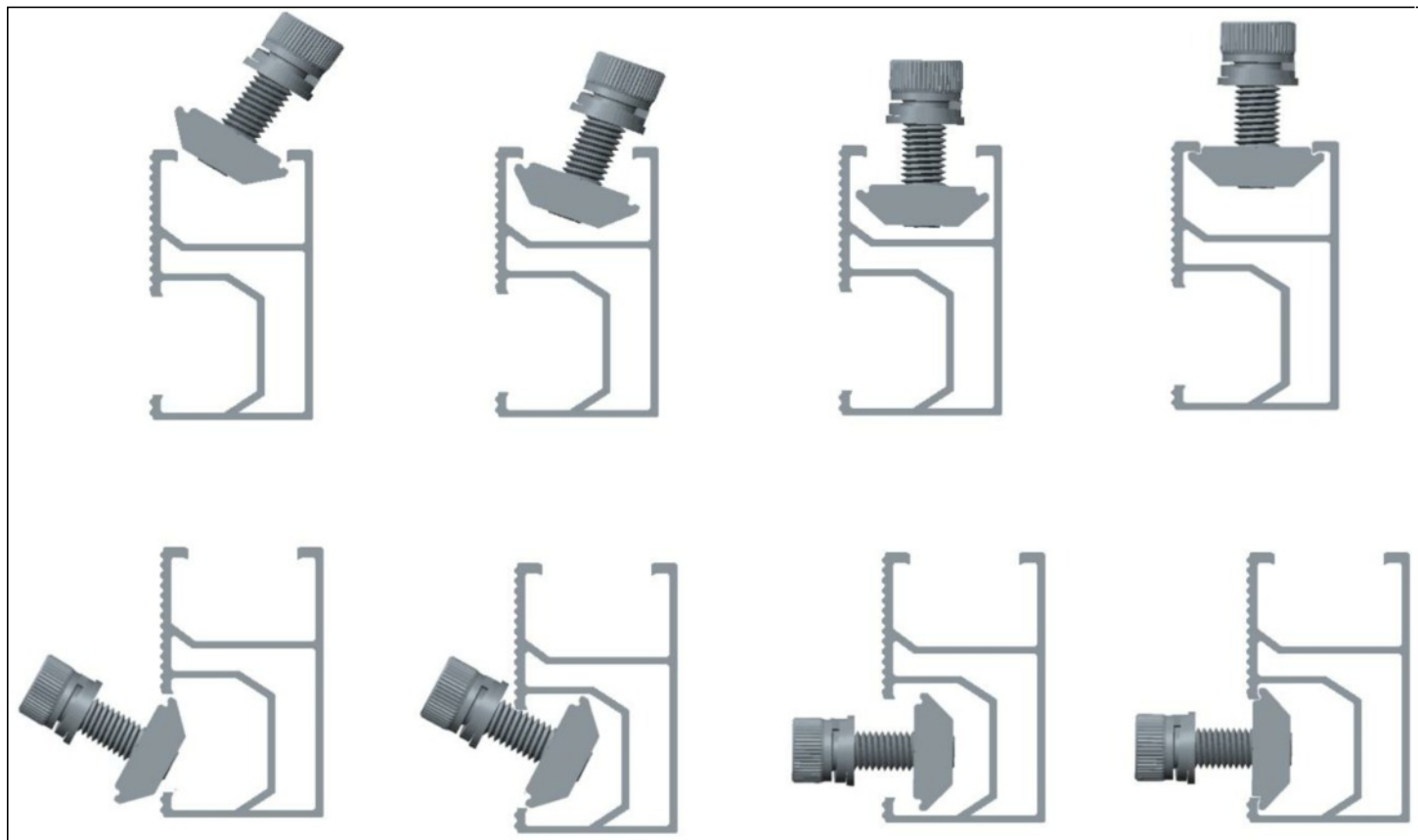
**4. Place the first solar panel of the bottom row. Slide the end clamp tightly against the solar panel and fasten it. Fix the solar panel with the end clamps and inter clamps.**



**5. Finished.**



## Installation of nut:



### Registered office:

Sunshine Solar Limited

Unit 30, Ashwellthorpe Industrial Estate

Ashwellthorpe

Norwich

Norfolk

NR16 1ER

tel. +44 (0)1508 488188

email. [support@sunshinesolar.co.uk](mailto:support@sunshinesolar.co.uk)

web. [www.sunshinesolar.co.uk](http://www.sunshinesolar.co.uk)