









# Installation Guide



## Components List:

Model name	XGS101/116	Anchor Bolt	Angle	Bolt & Nut
Picture				

Model name	Rail	Splice	End Clamp	Mid Clamp
Picture				

## Safe Installation Guide

This manual contains critical information regarding electrical and mechanical installation and safety information which you should know before starting installation.



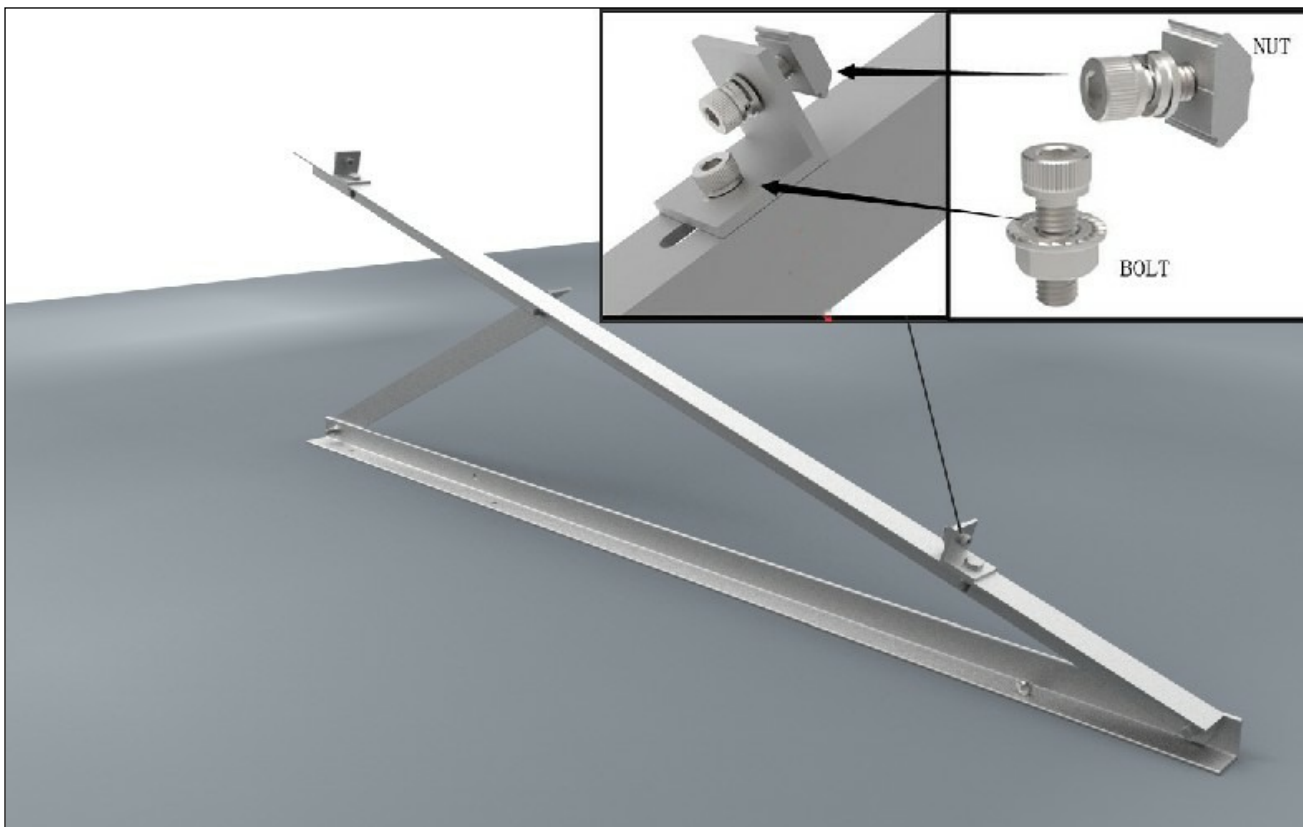
- Stop work during stormy weather. Solar modules can be caught in the wind, causing you to fall.
- Never step or sit on the glass surface of a solar module. The glass may break, resulting in shock or bodily injury. The module may also stop generating power.
- Always use the supplied parts to attach the solar modules and mounts. Use of weaker parts, such as screws that are too short, is dangerous and may cause the solar modules or mounts to fall.
- Always use the specified tools. The solar modules or mounts may fall if the installation is not strong enough, for example when parts are not tightened sufficiently.
- Do not modify or cut parts. Doing so is dangerous. Safety cannot be guaranteed.
- If you are unsure please seek the advice of a suitably qualified person.

### POINTS TO CHECK

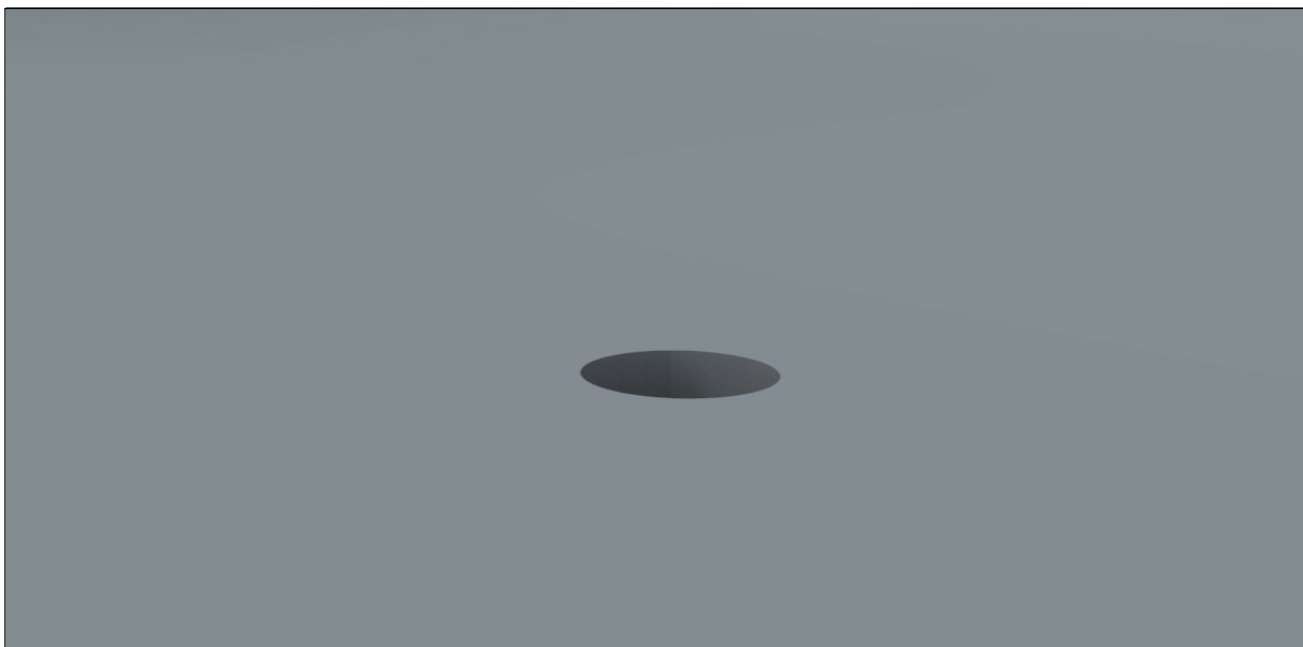
- Determine the wind loads for the installation site.
- Check with your local building and safety department for the specific requirements.
- Make certain that the roof structure can support the weight of the mounts and PV array.
- Install solar modules facing south, if possible. Installations facing east and west are also possible, although the amount of power generated will be lower.

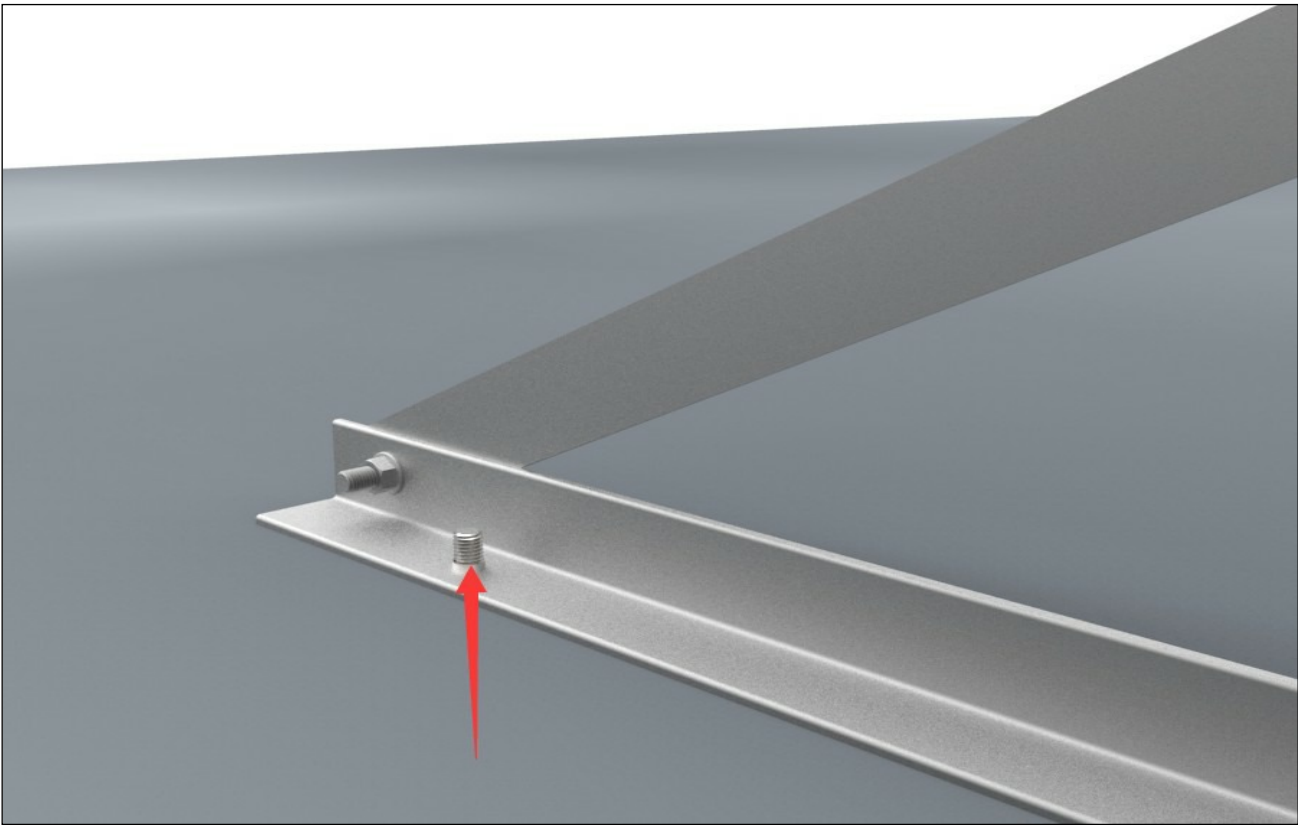
## Installation Steps

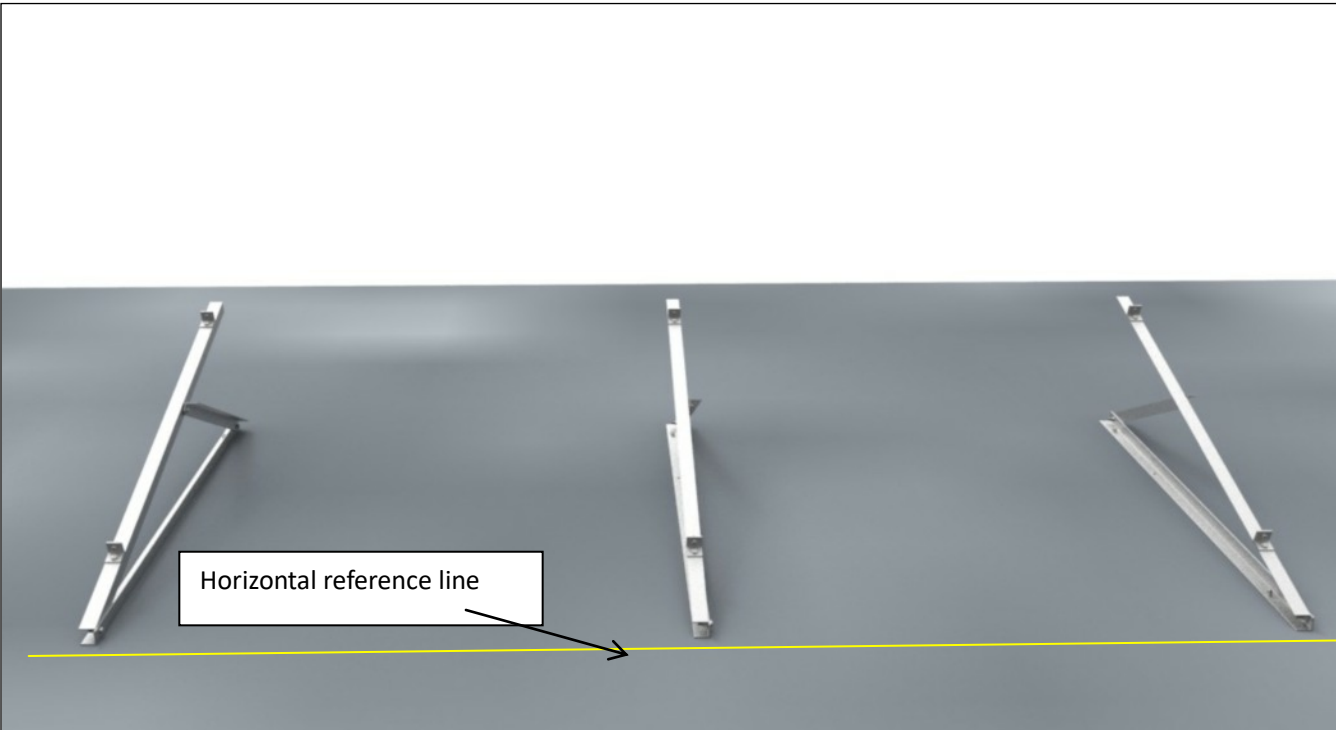
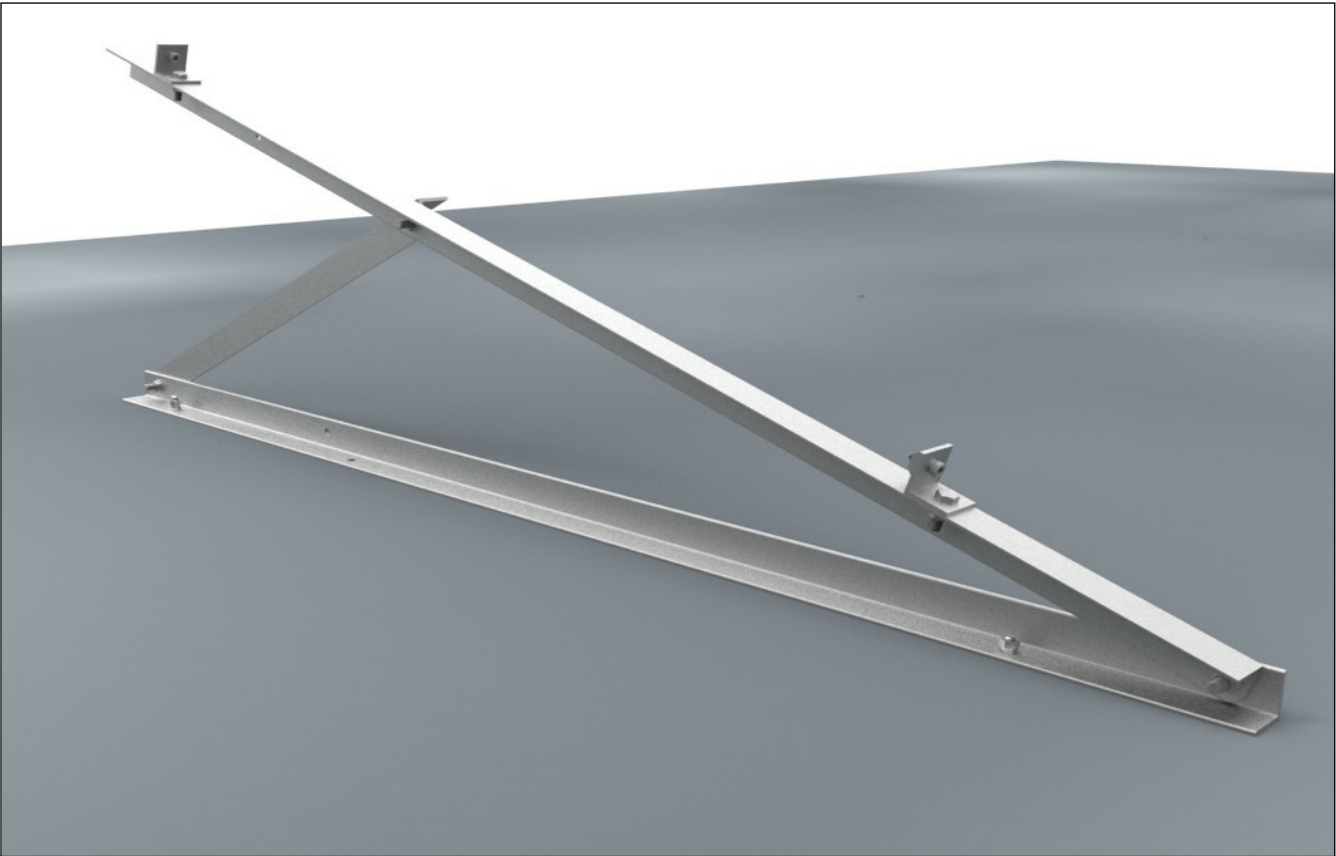
1. Attach two brackets to each frame with a nut and bolt.



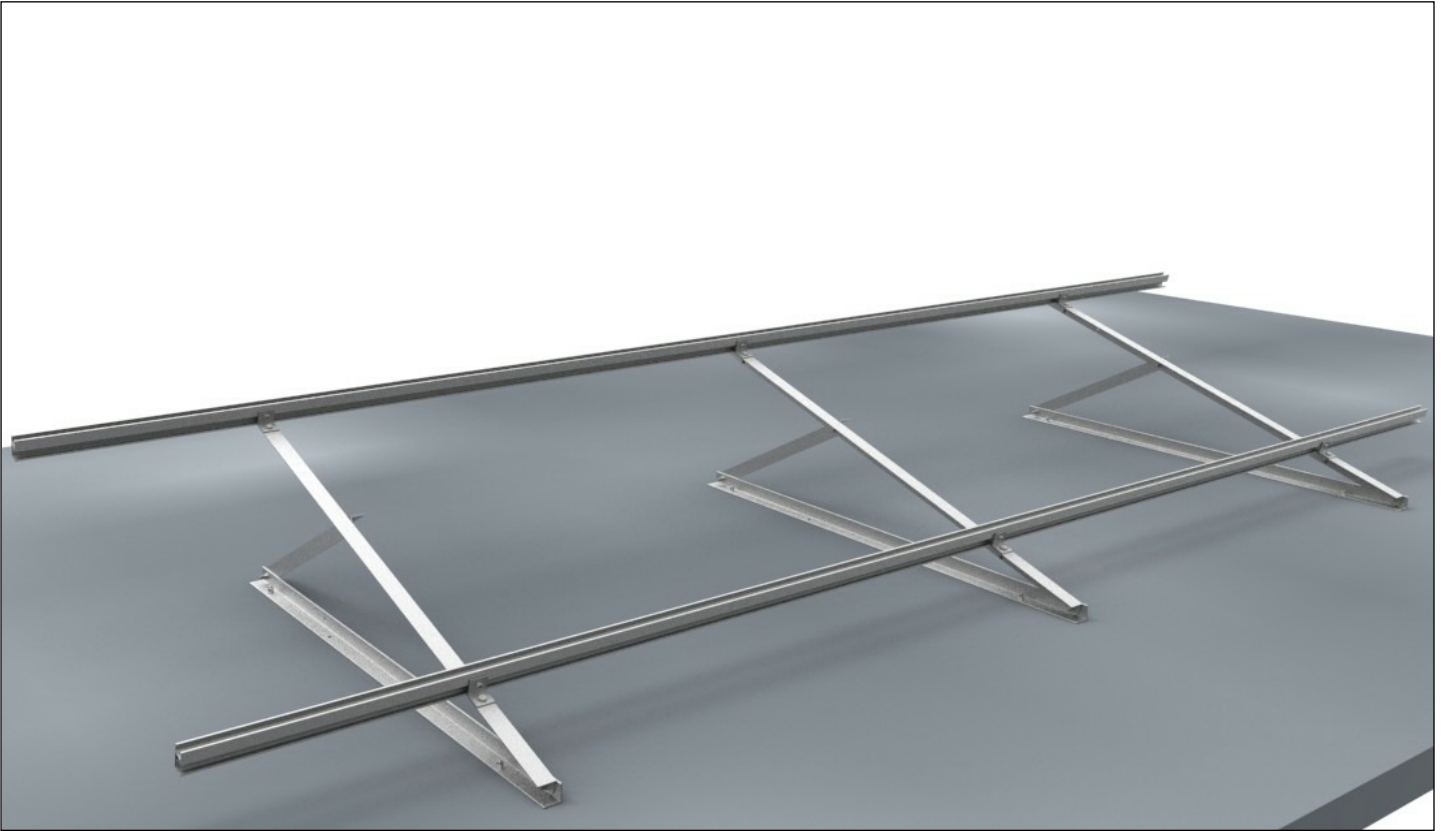
2. If using anchor bolts, mark and drill the holes to correspond with the frames and place a bolt in each hole. The frames should be level. Use a horizontal reference line as a guide.



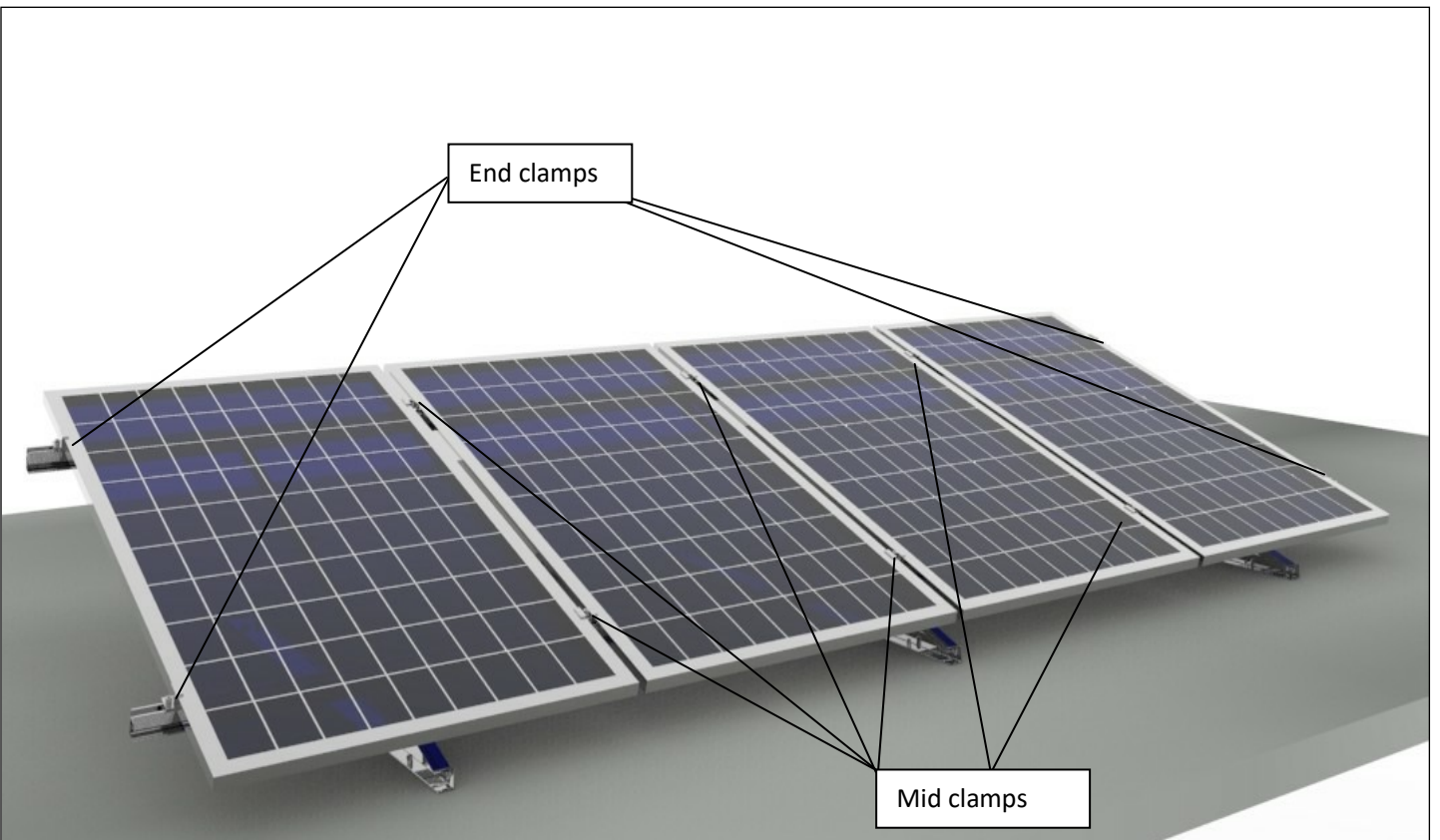




3. Install the rails as shown below.

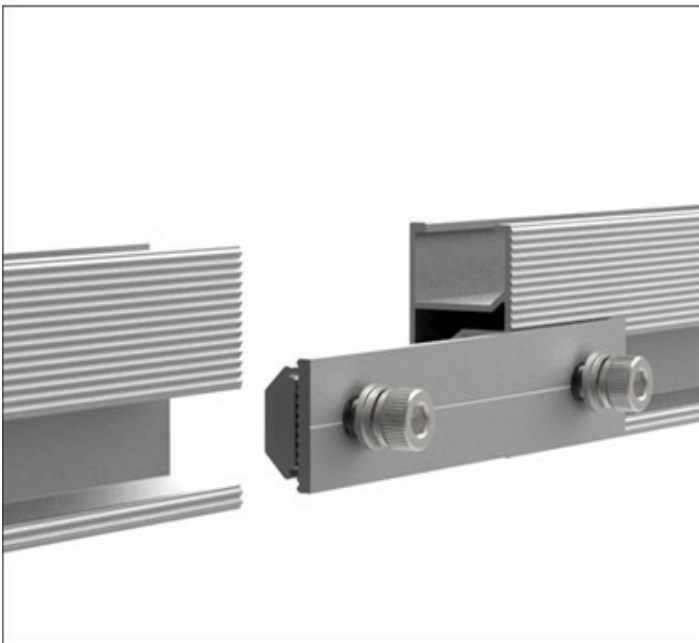


4. Place the first module of the bottom row. Slide the end clamp along the rail, tightly against the module and fasten in place. Install the end clamps and mid clamps.



## Installation of the splice to connect multiple rails together

Slide the splice on the rear side of the pre-assembled rails. Fasten the first bolt firmly. Then slide next rail into the splice. When together, fasten the other bolt. The connection is finished. An expansion gap at the rail joints is suggested. Leave a gap about a finger width.



**Installation of nut**

